



"Amazing Speed, we are foring it!"



VF300

Smart Face Identifi- cation Terminal

Introduction

VF300 is a new generation facial identification terminal, with Face, PIN recognition and optional with RFID mode. With latest facial algorithm ZK Face 7.0 and large capacity ZEM810 platform, it can hold 200 face templates without dividing groupsits and the verification time is less than 1 Second. All setting operations are easily done on 3.0 inches TFT touch screen. The elegant and small size design can fit with your slap-up office. Have ZK Face identification system, your life will become more security and convenient.





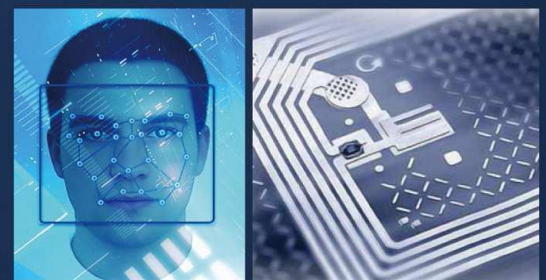
Specifications:

Core Board	Platform: ZEM810
Image Sensor	Special Stereo Dual Sensor
Display	3 Inch Touch Screen
Face Capacity	200(1:N)
ID Card Capacity	10,000
Logs Capacity	100,000
Algorithm Version	ZKFace7.0
Communication	TCP/IP, USB Host
Standard Functions	ID Card, Automatic Status Switch, Self-Service Query, Work Code, T9 input, 9 Digit User ID, DLST, Scheduled-bell.
Optional Functions	Mifare Card.
Power Supply	12V/1.5A
Verification Speed	≤1S
Operating Temperature	0°C-45°C
Operating Humidity	20%-80%
Dimensions	104.70(L)*160.00(H)*36.00(D) mm

Features:

- * Elegant ergonomic design.
- * TCP/IP communication and USB Host.
- * 3.0 inch TFT touch screen, T9 Input, 9 Digit User ID.
- * Infra-red optical system enables user-identification in poorly lit environments.
- * Optional Mifare card module.
- * Professional facial identification algorithm.

Configuration:



www.ccssc.o.th

